

# TER16 Thinpropeller

## GENERAL CHARACTERISTICS

**Wet / White Wet Inlay dimensions:** 97 x 12 mm

**—Antenna dimensions:** 95 x 8 mm

**Standard pitch:** 16,4 mm

**Operating frequency:** Global (860 - 960 MHz)

**Chip:** IMPINJ Monza R6 / R6P

**EPC Memory:** 96 / 128 bits auto serialized

**USER Memory:** NA / 32 bits

**TID Memory:** 64 bit with 48 bit unique serial number

**Inlay substrate material:** PET

**Inlay-to-liner adhesive:** SH3020 (Arconvert)

**Liner material:** CC62 (Arconvert)

**Total thickness over chip:** 170 microns

**Standard web width:** 110 mm

**Unwind direction:** Label side out

**RF Protocol:** ISO-18006-C, EPC Class 1, Gen 2

**RoHS:** EU Directive 2011/65 EU Compliant

**Quality assurance:** 100% read tested with out-of-tolerance inlay marked

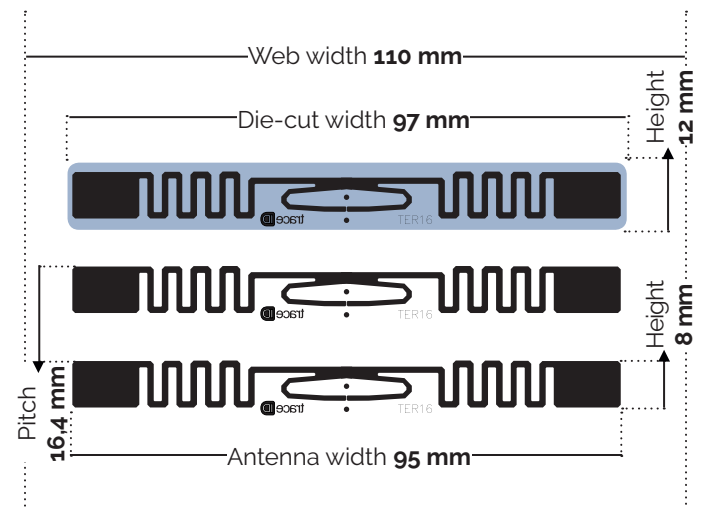
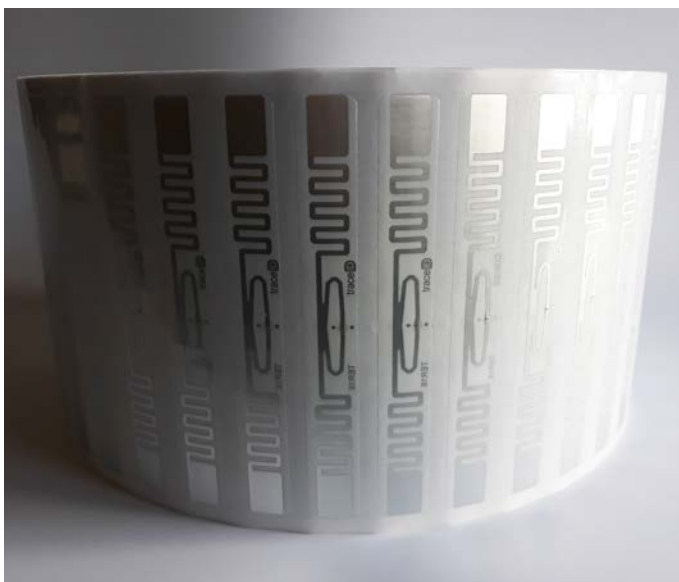
**Operating temperature:** -40°C to 85°C

## COMMON APPLICATIONS

*Apparel and other retail item-level. Supply chain, inventory and logistics. Returnable Transport Units.*

*Minimum order quantity: 10,000 pcs. Average of units per roll: TBD*

UHF RFID tag TER16 Thinpropeller suits RFID solutions for **Returnable Transport Units** as well as for **supply chain, logistics, and inventories**. It's also appropriate for **retail item-level deployments** like apparel traceability.



*CARE AND HANDLING RFID inlays are sensitive to ESD. Observe standard practices to keep environmental static charge to a minimum. APPLICATIONS This product should be tested by the customer/user thoroughly under end use conditions to ensure the product meets the requirements. Trace-ID does not represent that this product is fit for any purpose or use. PRODUCT CHANGES Trace-ID reserves the right to modify, change, supplement or discontinue product offerings at any time without notice. © 2018 Trace-tech Id Solutions S.L. All rights reserved.*