

T4015-iL

GENERAL CHARACTERISTICS

Wet / White Wet Inlay dimensions: 43 x 18 mm

—Antenna dimensions: 40 x 15 mm

Standard pitch: 28 mm

Operating frequency: Global (860 - 960 MHz)

Chip: NXP UCODE G2iL

EPC Memory: 96 / 128 bits auto serialized

USER Memory: NA / 32 bits

TID Memory: 64 bit with 48 bit unique serial number

Inlay substrate material: PET

Inlay-to-liner adhesive: SH3020 (Arconvert)

Liner material: CC62 (Arconvert)

Total thickness over chip: 170 microns

Standard web width: 52 mm

Unwind direction: Label side out

RF Protocol: ISO-18006-C, EPC Class 1, Gen 2

RoHS: EU Directive 2011/65 EU Compliant

Quality assurance: 100% read tested with out-of-tolerance inlay marked

Operating temperature: -40°C to 85°C

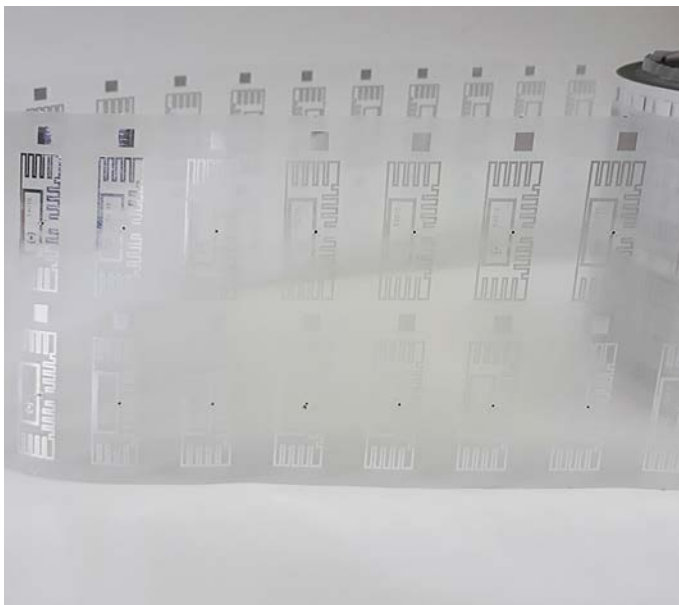
COMMON APPLICATIONS

Supply chain, inventory, and logistics

Pharmaceutical and healthcare.

Minimum order quantity: 10,000 pcs. Average of units per roll: TBD

The UHF RFID tag **T4015-iL** suits a broad range of RFID deployments, from the supply chain and logistics to traceability in the pharmaceutical, healthcare or cosmetics industries, and also other RFID deployments of retail item level.



CARE AND HANDLING RFID inlays are sensitive to ESD. Observe standard practices to keep environmental static charge to a minimum. APPLICATIONS This product should be tested by the customer/user thoroughly under end use conditions to ensure the product meets the requirements. Trace-ID does not represent that this product is fit for any purpose or use. PRODUCT CHANGES Trace-ID reserves the right to modify, change, supplement or discontinue product offerings at any time without notice. © 2018 Trace-tech Id Solutions S.L. All rights reserved.

